

JVC

The Perfect Experience

Video Management Software (LE)

VN-RS800U

June 2010 Upgrade Ver5.3



Updated to support Windows 7 / Windows Server 2008

**Professional Surveillance Software up to 32 channel
with supporting all JVC VN-V / VN-X IP cameras**

Basic function

Number of connected cameras : 32
Display frame : up to 16fps max (VGA)
Record frame : up to total 96fps (VGA/REC only)
up to total 80fps (VGA/REC & display)
* by PentiumD 2.8GHz

Live Viewing

Select split mode: 1, 4, 5, 9, 12, 16 views
Automatic sequential mode
PTZ Camera control:
VN-V685U/V686BU/V686WPBU/V686U/V686WPU/
C625/C655
VN-X35U/X235U/X235WPU (Digital PTZ),
TK-C676EB / TK-C655EB / TK-C625E via VN-E4 Encoder

Bi-Directional Audio

Bi-Directional Audio Communication with
VN-V26U/X35U/V225U/V225VPU/X235U/X235VPU
and VN-E4
and recording both sent/received audio with video.

Recording function

Always REC / Manual REC
Alarm REC (pre and post alarm) / Timer REC

Alarm function

Activation by camera alarm (terminal/motion detect)
Alarm recording (automatic stop)
Frame rate set up for alarm recording
Alarm message display
Warning detect (camera error, HDD error)

Search & Playback function

Time & date search / Event list search
Snap shot (JPEG)
Video file export & saving (AVI file)

Video Management Software (LE) VN-RS800U Specifications

• Operating environment

- PC -

Machine	Compatible with PC/AT
CPU	Intel Pentium 4(HT on) / D / Xeon Intel Core 2 Duo 2.4 GHz or higher recommended
HDD	200MB for installation, recording file folder internal disk drive recommended Image record volume the NTFS format, the internal disk drive, and RAID 1/5 recommended
Memory	1GByte or more
Graphic board	VRAM 16MB or more (Unshared with the main memory) 1024 x 768 True color (32-bit) recommended

-OS -

Windows XP Server 2003, Standard Edition R2 SP2 (32bit)	
Windows XP Server 2008, Standard Edition SP2 (32bit) *1/*2	
Windows XP Professional SP3 (32bit) *1	
Windows Vista Business SP2 (32bit) *1 / *2	
Windows 7 Professional (32bit) *1 / *2	

(*1) Needs to set "Windows firewall".

(*2) Needs to set user account control (UAC).

(Tested under Windows English version.)

- Network -

Recommended stable LAN less than 100msec delay and 1% packet loss.
Low quality Wireless LAN/WAN is not recommended.

• Supported IP cameras and video servers

VN-V25U, VN-V26U, VN-V686BU/WPBU, VN-V685U, VN-V686U/WPU,
VN-V225U/VPU, VN-X235U/VPU, VN-X35U
VN-C20U, VN-E4U/E, VN-C215V4U/VP4U,
VN-A1U, VN-C625U, VN-C655U, VN-C205U
VN-C10U, VN-C11U, VN-C30U

Note:

- VN-RS800U supports only JPEG. (Mpeg4 is not supported)
- Above mode names shown in *Italic* indicate "Prev. Vnet" Model at the
matrix below..

• Number of supported cameras

Up to 32 (per one PC)

• Recording performance (fps)

CPU	Resolution	Model	Rec only	Display+ REC
PentiumD 2.8GHz	QuadVGA	Prev. Vnet	64	32
		New API	96	80
	VGA	Prev. Vnet	48	16
		New API	128	96
Core 2 Duo 2.4GHz	QuadVGA	Prev. Vnet	80	48
		New API	160	80
	VGA	Prev. Vnet	112	80
		New API	288	192
QVGA	Prev. Vnet	160	128	
	New API	288	224	

Note

- This is a rough indication. Please adjust the total frame rate to keep
CPU usage less than 65%.

• Live display control

No. of windows	Max 16 split windows
Split pattern	1 / 4 / 5 / 9 / 12 / 16 views
Camera control	Pan, Tilt, Zoom, Select position, Focus, and Auto pan control
Event log list	Available, Playback sound by event
On screen display	camera name, connection status, REC status, error message, and alarm
Audio monitoring / transmission for audio-supporting cameras.	

• Playback display control

No. of playback window	1
Search	time & date or event list
Playback speed	x1/8, 1/4, 1/2, 1, 2, 4, 8 (reverse direction)
Frame advance	+1/-1 frame
Snap shot	JPEG
Export & saving	AVI
Note:	During high speed (4/8 times) playback or AVI export, the recording frame rate might be reduced.

• Recording

File format	Proprietary (customized Motion Jpeg)
Audio REC	Yes
Manual REC (Emergency)	Yes
Alarm REC	Yes (Pre/Post alarm)
Timer REC	64 schedules
Always REC	Yes
Automatic delete	Yes
Note :	In case of pre alarm setting, it has same load factor as REC activation. Please verify total recording frame rate not to cause CPU overload and performance degrade.

• Alarm function

Alarm type	by camera alarm (Input/motion detect etc)
Alarm operation	Start REC(stop automatic) Change REC frame rate Display message, Sound playback
Failure detection	Detect camera disconnection and disk error.

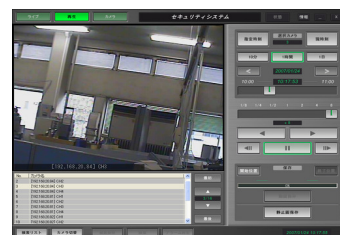
• Administration

No. of users	16
Set up item	Emergency REC , File playback, motion image save, camera control
Auto login	Yes

Live view



Playback



"JVC" is the trademark or registered trademark of Victor Company of Japan, Limited.

Microsoft and Windows are the registered trademarks or trademarks of Microsoft Corporation, U.S.A. in the United States and other countries.

Other company and product names are the registered trademarks or trademarks of respective companies. Registered trademark, trademark, and copyright symbols are omitted in this document.